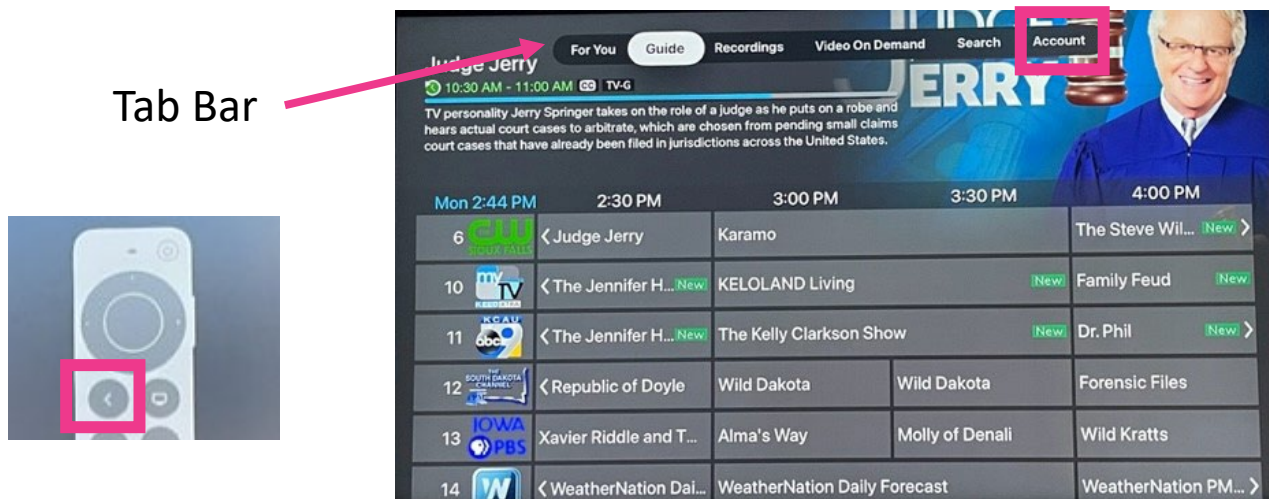


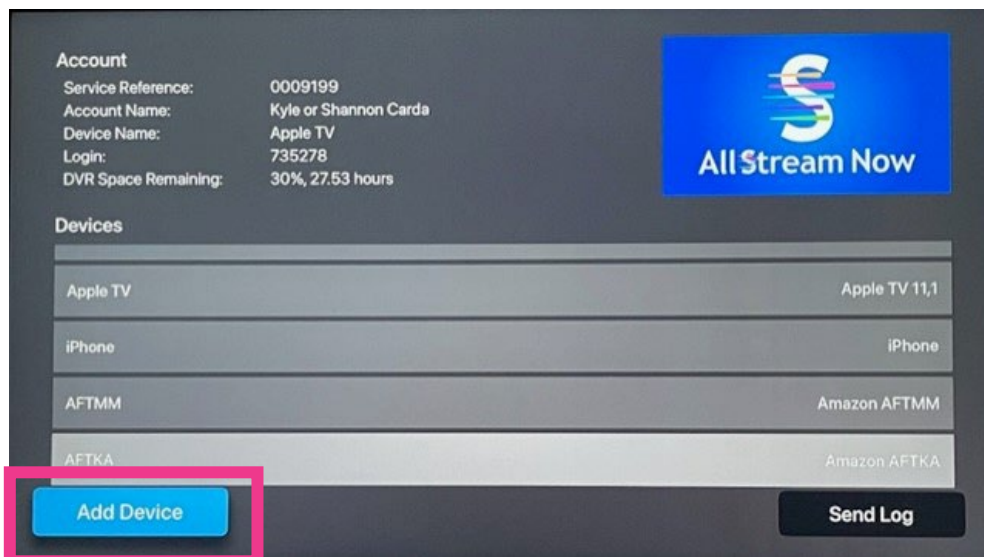
# How to add AllStream to more devices

You can add AllStream to more devices by generating a new login and passphrase. From an Apple TV that already has active AllStream service, open your AllStream app.

While you're in AllStream's programming guide, press the Back button on your remote to open the Tab Bar at the top of the guide. Then scroll over to Account in the Tab Bar.



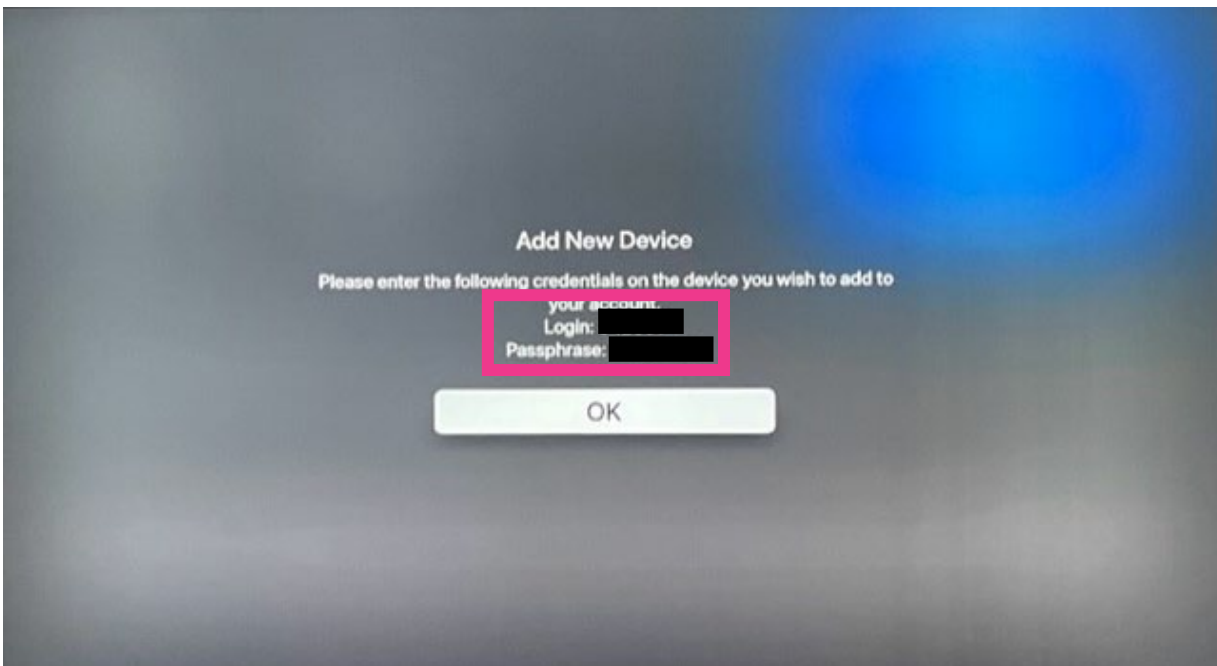
Scroll down and select Add Device.



A new Login and Passphrase will display on your screen. Use that information when activating AllStream on additional devices.

If you're adding another Apple TV, repeat the steps in this user guide.

If you're adding an Amazon Fire TV Stick 4K, an iOS mobile device or an Android device, refer to the user guides for activating AllStream on those devices.



# AllStream Now Support Resources

## User Guides

[alliancecom.net/support/allstream-now](http://alliancecom.net/support/allstream-now)

## Video Tutorials

[alliancecom.net/support/allstream-now](http://alliancecom.net/support/allstream-now)

[youtube.com/@alliancecomm](https://youtube.com/@alliancecomm)

Dial 611 phone any phone with Alliance service or call (605) 582-6311.