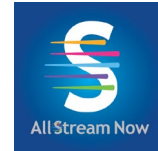


Activating AllStream Now on Android Mobile Devices



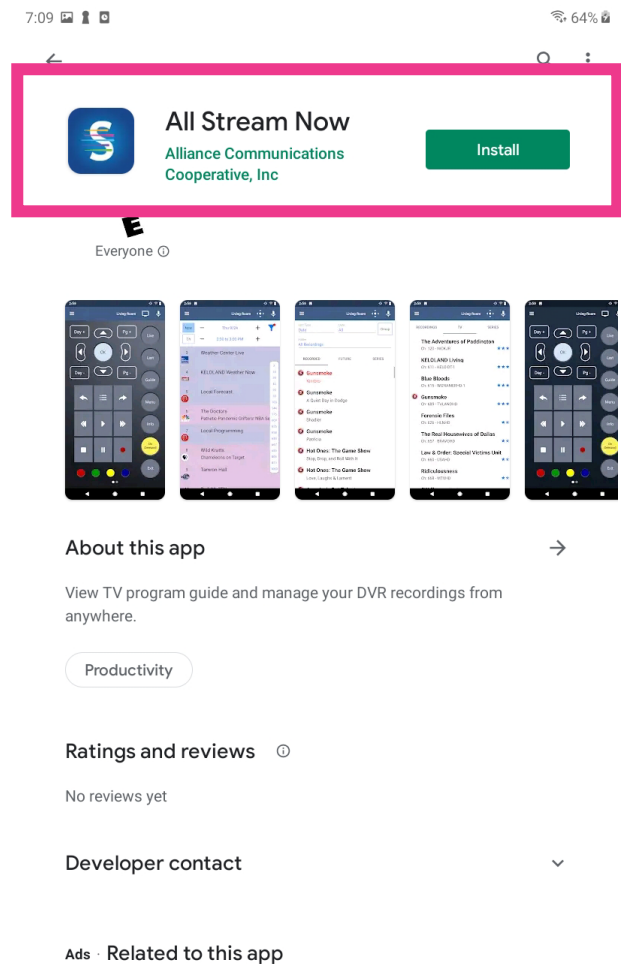
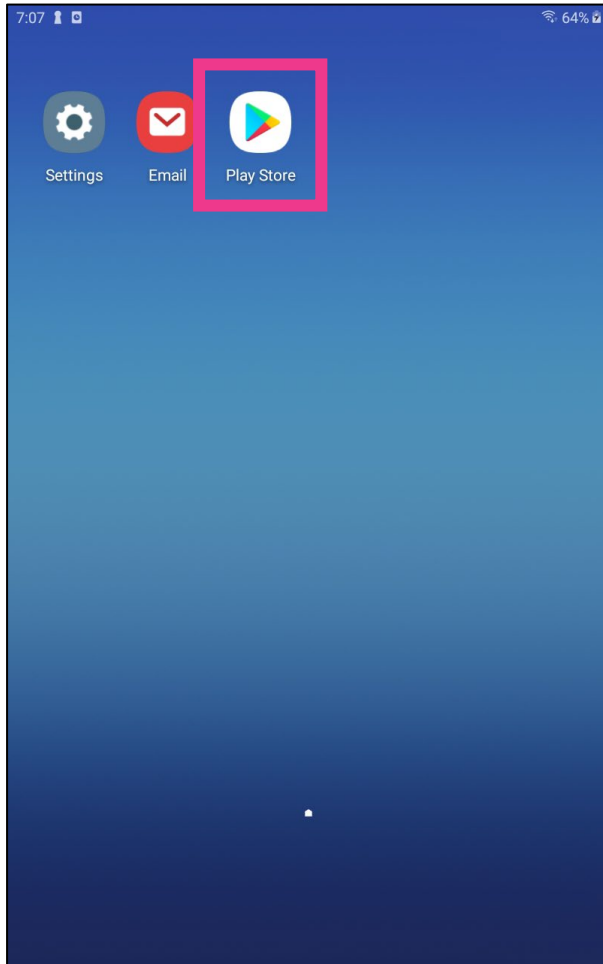
****Instructions for your Android device may vary depending on its model and software version.****

Getting Started

You will need these items before you begin:

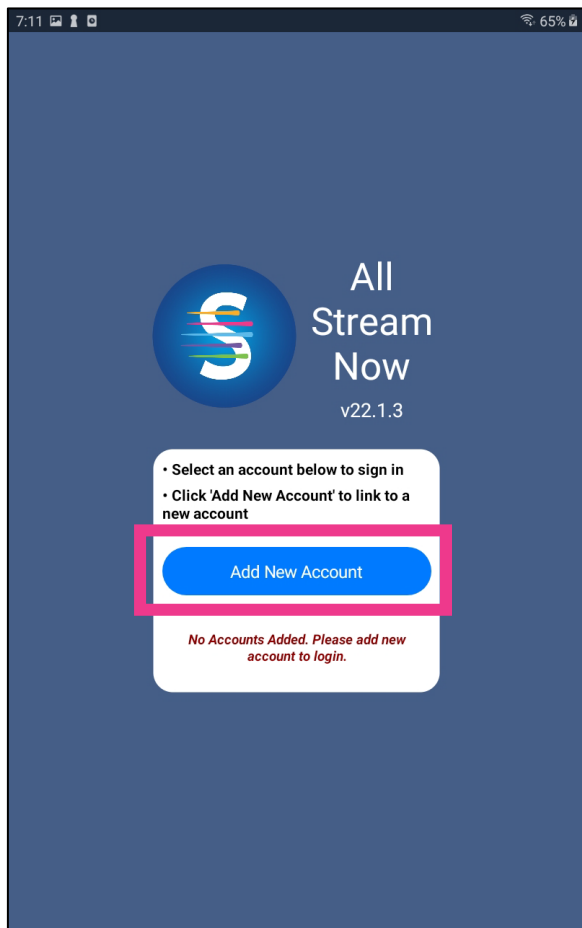
1. Your Google Play username and password.
2. AllStream Login and Passphrase. Alliance should have emailed this to you, or you can generate a new one from a device that already has AllStream activated on it. Call us at (605) 582-6311 if you need help.

Go to the Google Play Store and search for allstreamnow as one word (no spaces). Then install and open the app. Depending on your settings, you might be prompted to enter your Google Play username and password or other authentication steps.

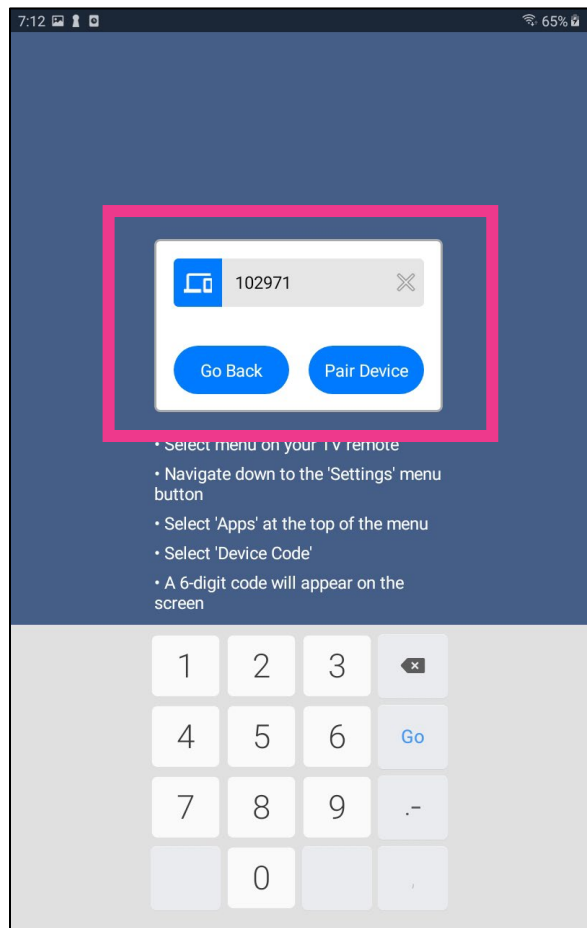


Next, you will need the AllStream Login and Passphrase you received by email from Alliance, or you can generate new ones from a device that already has AllStream activated on it.

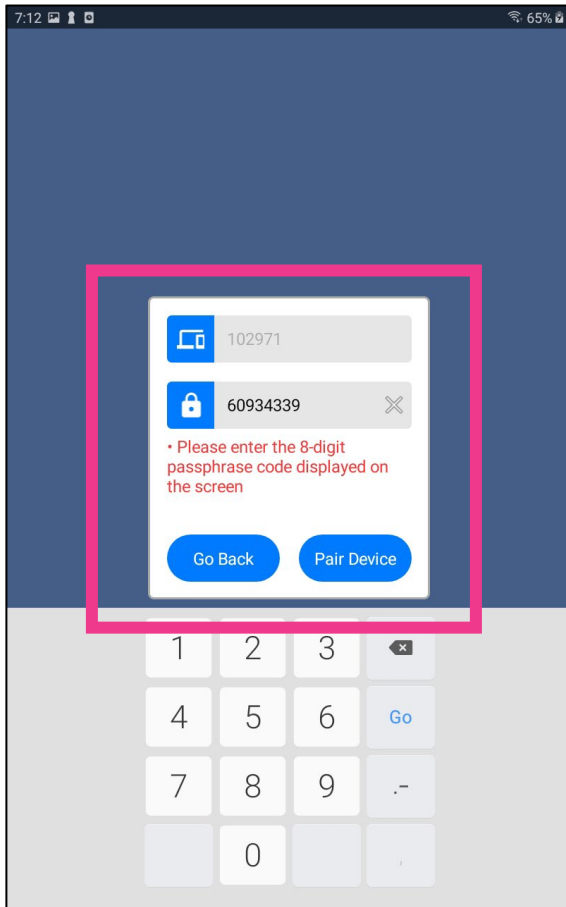
From the AllStream home screen, press on Add New Account.



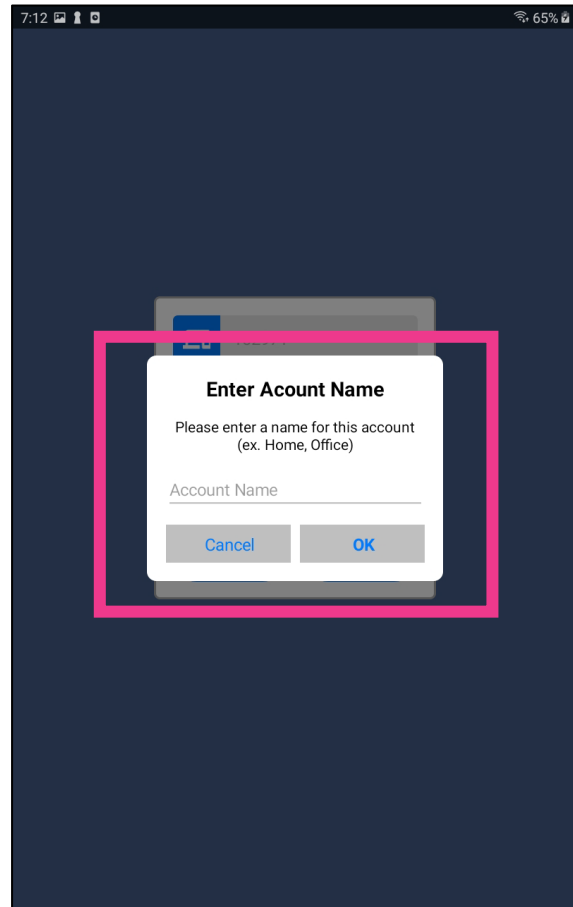
Enter the AllStream Login and then select Pair.



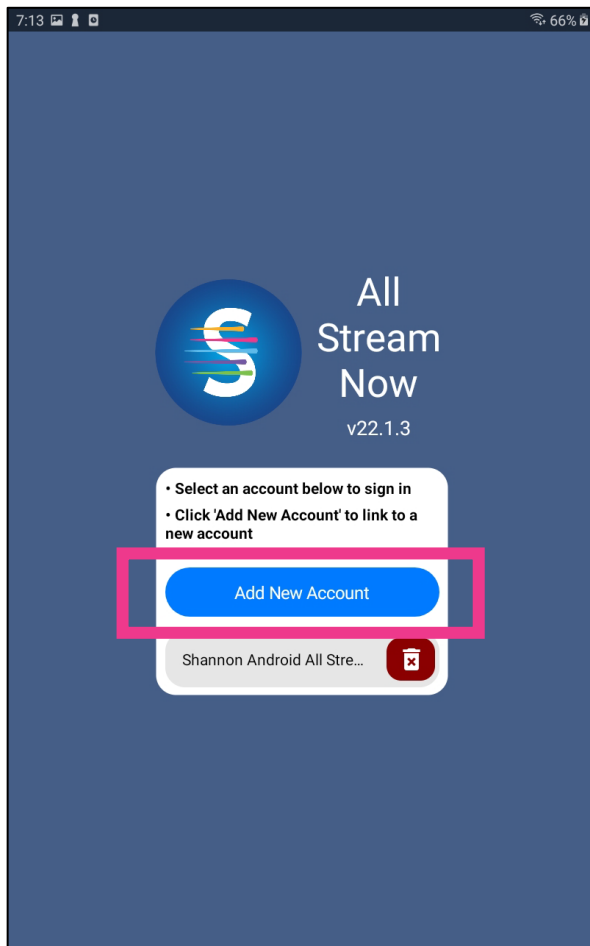
Next, enter the Passphrase.
Then select Pair.



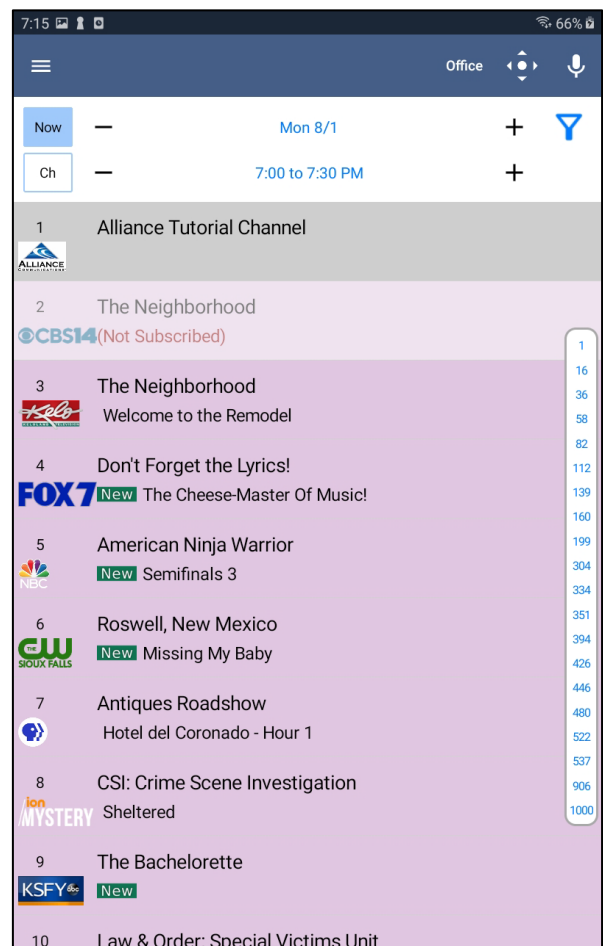
Enter a name for the
account and click OK.



To watch programming on your device, select the account you just added.



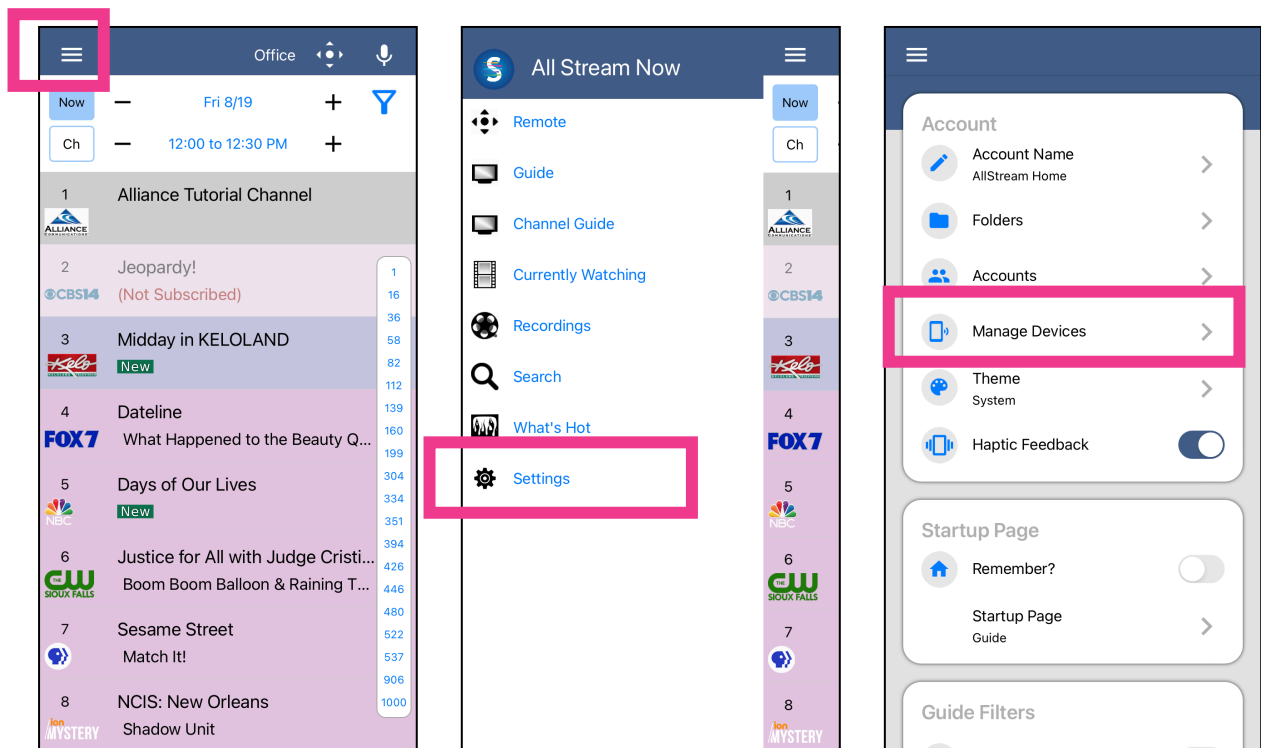
The programming guide will appear. Select the channel you want to watch. For more options, press the menu button in the top left corner.



How to add AllStream to more devices

You can add AllStream to more devices by generating a new login and passphrase.

From an Android device that already has active AllStream service, press the Menu button at the top. Next press Settings, and then press Manage Devices.

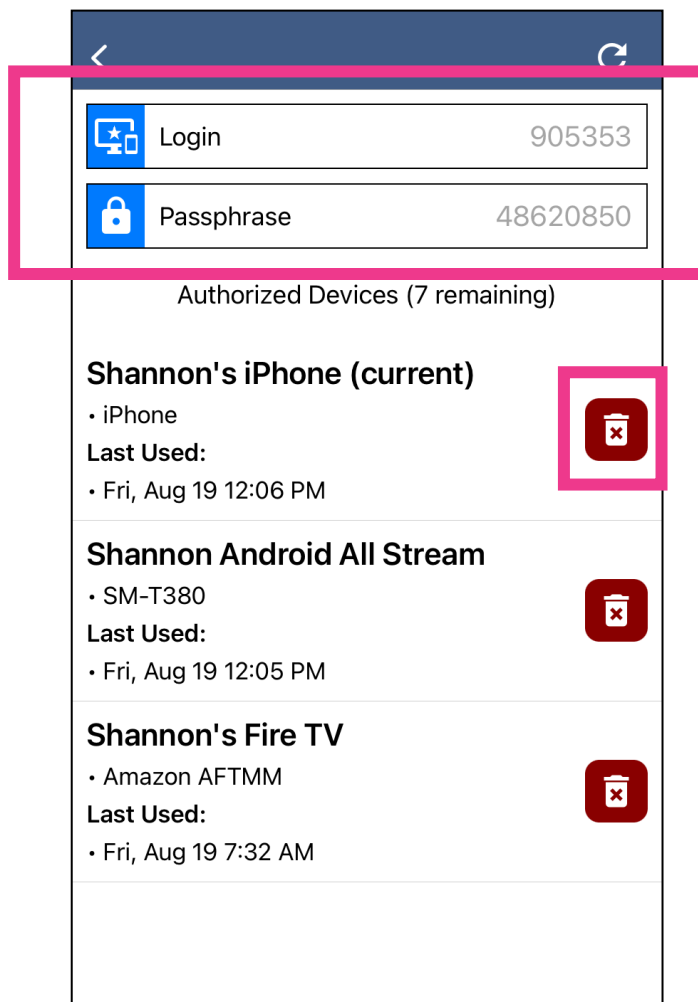


How to add AllStream to more devices, continued

Next, a new Login and Passphrase will display on your screen. Use that information when activating AllStream on more devices.

If you're adding another Android device, repeat the steps in this user guide. If you're adding an Amazon Fire TV stick, an Apple TV or an iOS device, refer to the user guides for activating AllStream on those devices.

You can also use this area to delete any authorized device.



AllStream Now Support Resources

User Guides

alliancecom.net/support/allstream-now

Video Tutorials

alliancecom.net/support/allstream-now
[youtube.com/@alliancecomm](https://www.youtube.com/@alliancecomm)

Dial 611 phone any phone with Alliance service or call (605) 582-6311.