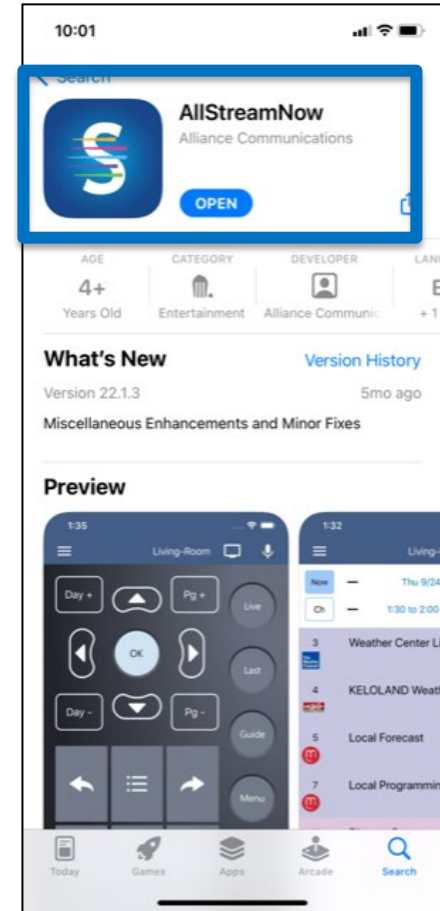
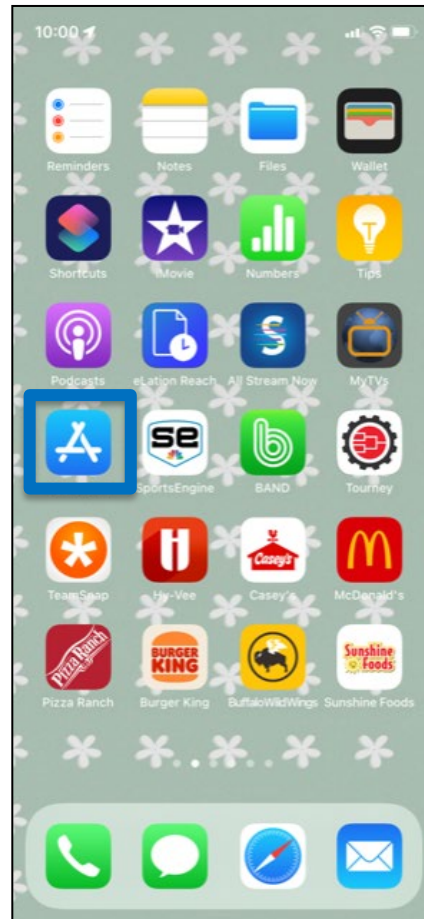
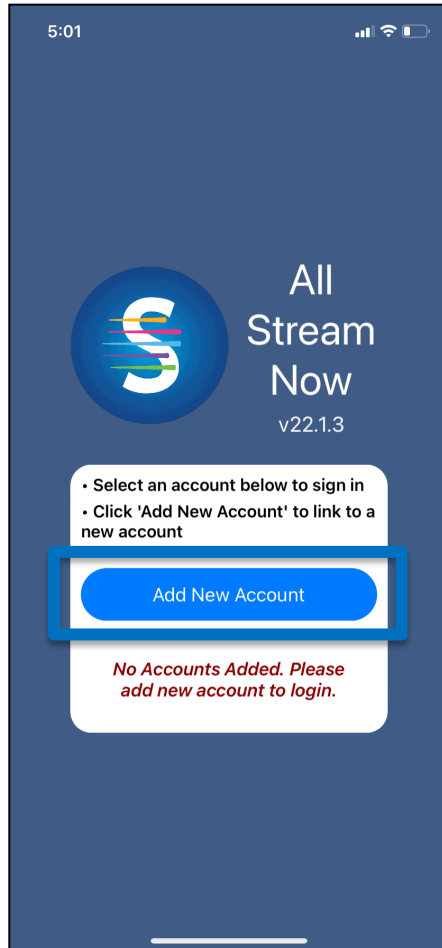


Go to the Apple App Store and search for AllStreamNow. Then download and open the app.

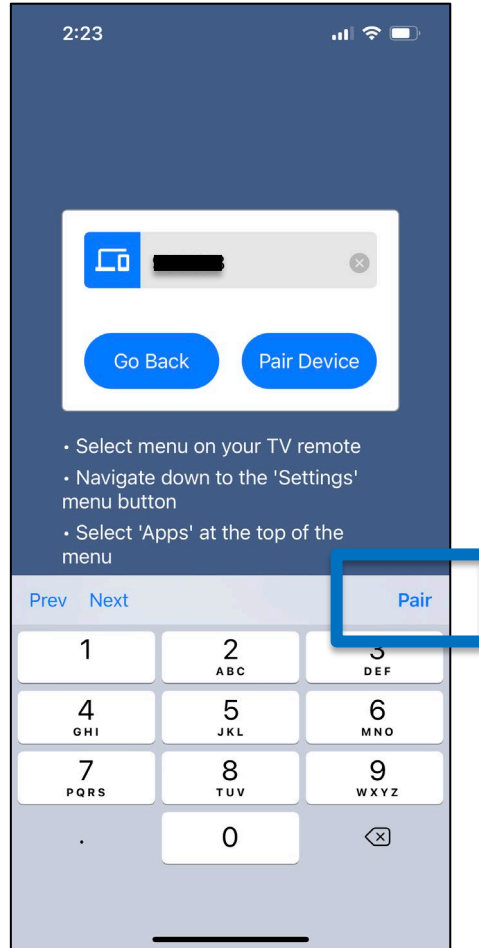
****Instructions for your iOS device may vary depending on its model and software version.****



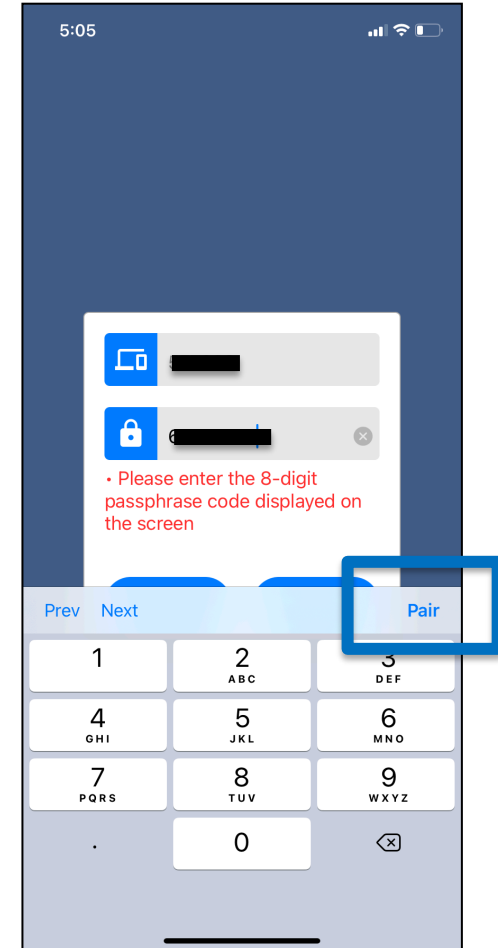
Click on Add New
Account.



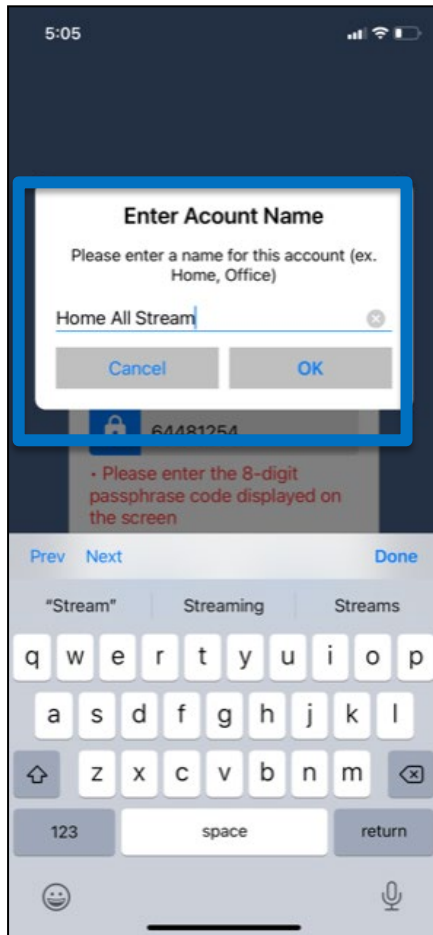
Enter the 6-digit Login
and then select Pair.



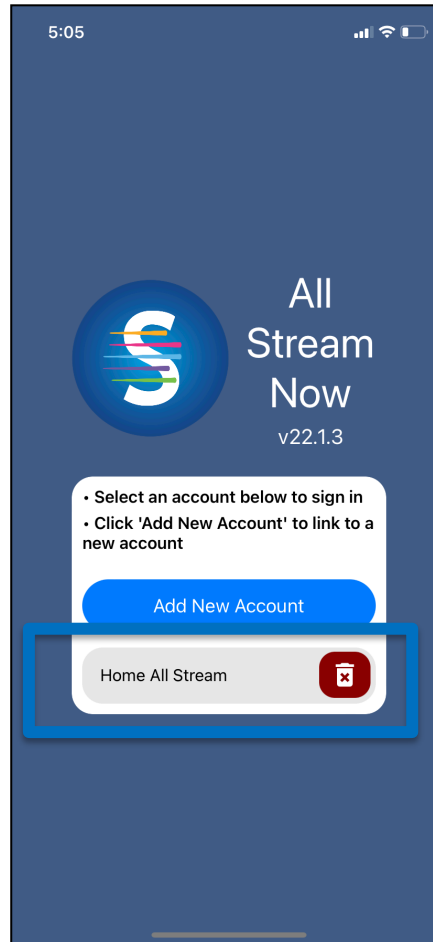
Enter the 8-digit Passphrase.
Then select Pair.



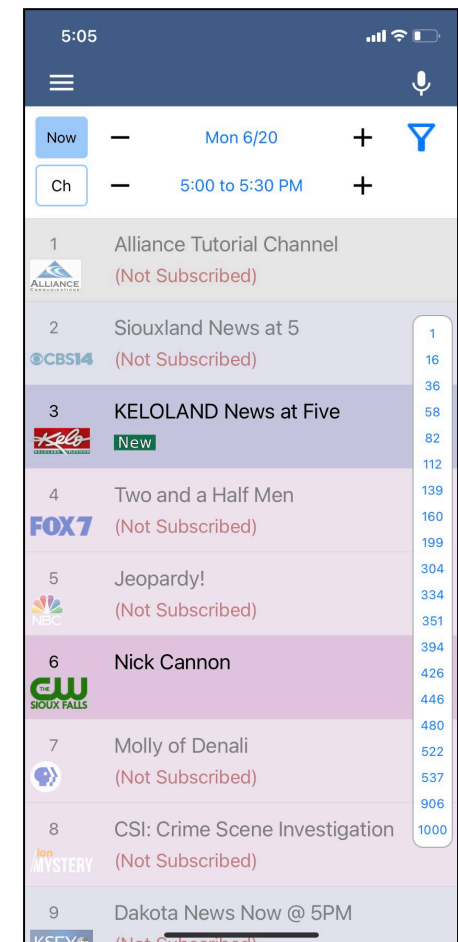
Enter a name for the account and click OK.



To watch programming on your device, select the account you just added.



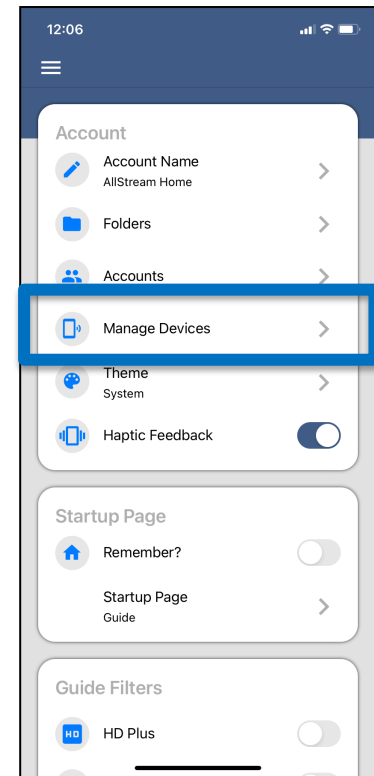
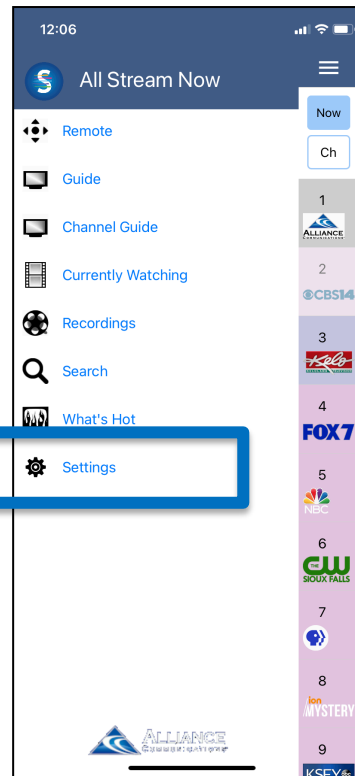
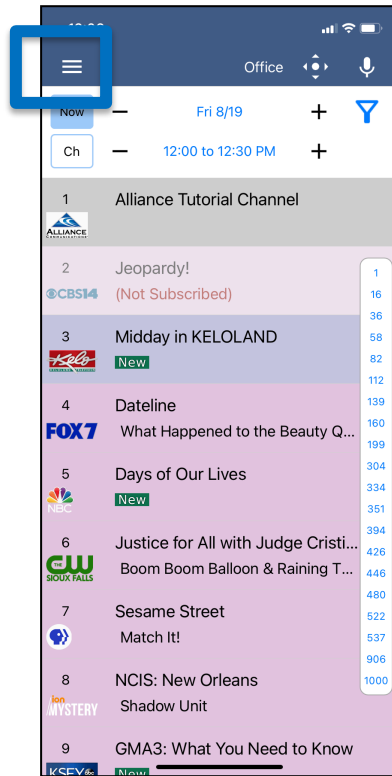
The programming will appear. Select the channel you want to watch.



How to add AllStream to more devices

You can add AllStream to more devices. You just need to generate a new login and passphrase.

From an iOS (Apple) device that already has active AllStream service, open your Tab Bar by pressing the Menu button at the top, which will open the menu. Then press Settings, then Manage Devices.



How to add AllStream to more devices, continued

Next, a new Login and Passphrase will display on your screen. Use that information when activating AllStream on additional devices.

If you're adding another Apple iOS device, repeat the steps in this user guide. If you're adding an Amazon Fire TV stick, an Apple TV or an Android device, refer to the user guides for activating AllStream on those devices.

You can also use this area to delete any devices currently authorized.

