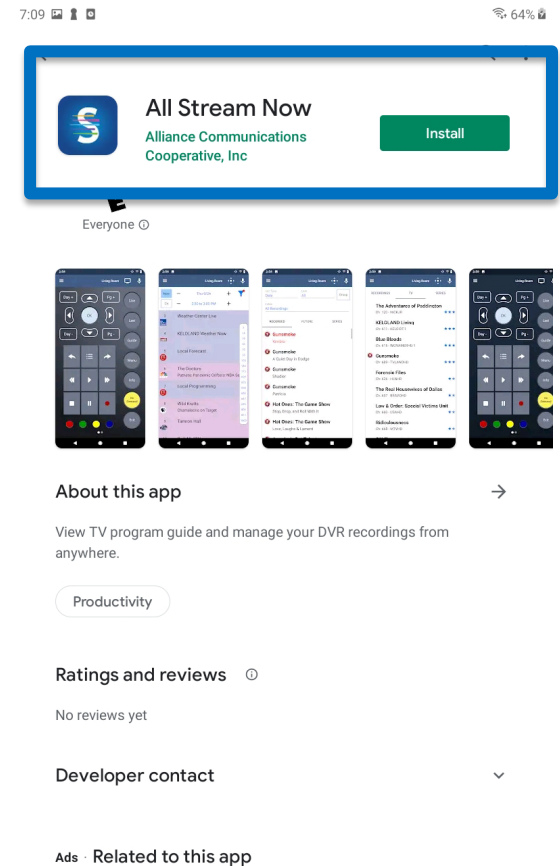
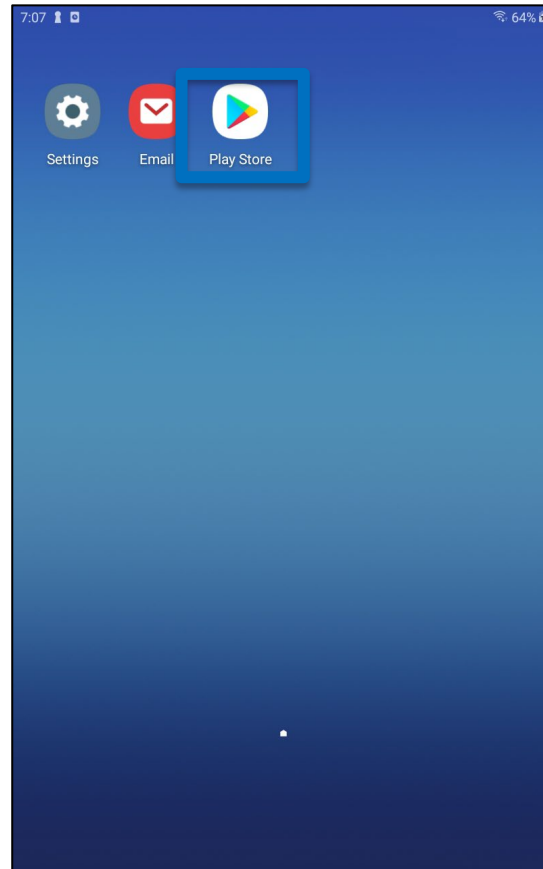
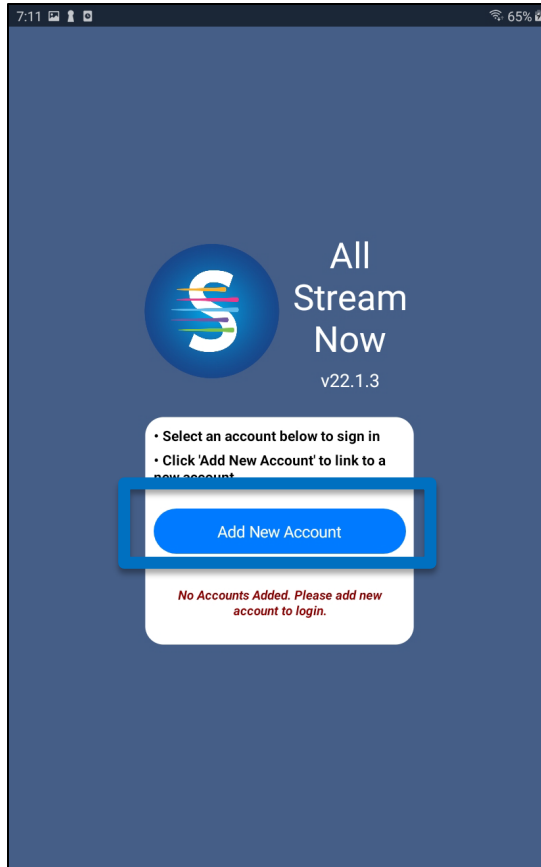


Go to the Google Play Store and search for AllStreamNow. Then download and open the app.

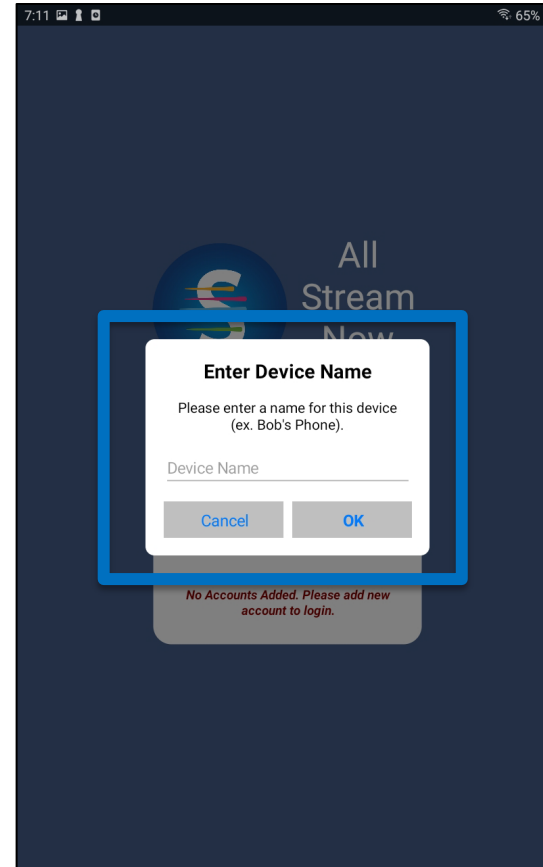


****Instructions for your Android device may vary depending on its model and software version.****

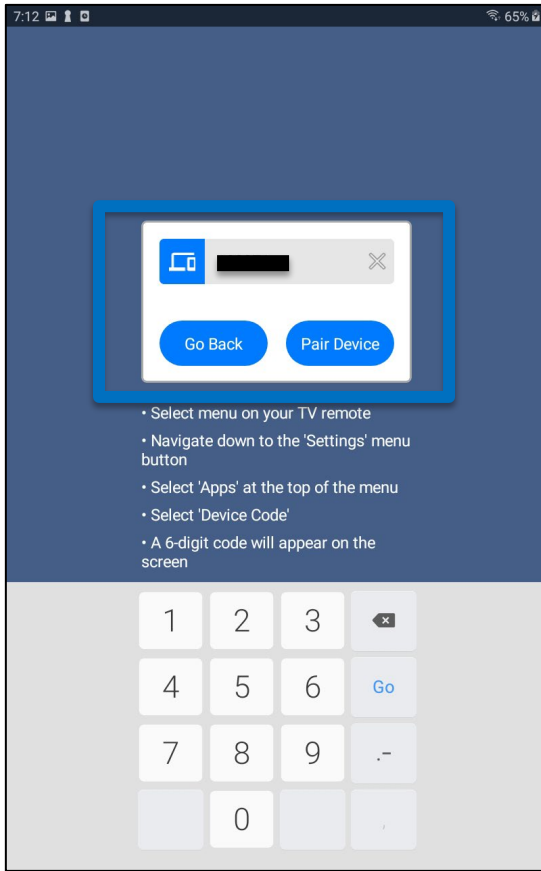
Click on Add New Account.



Enter a name for the device and
click OK.



Enter the 6-digit Login
and then select Pair.



7:12 65%

Go Back Pair Device

- Select menu on your TV remote
- Navigate down to the 'Settings' menu button
- Select 'Apps' at the top of the menu
- Select 'Device Code'
- A 6-digit code will appear on the screen

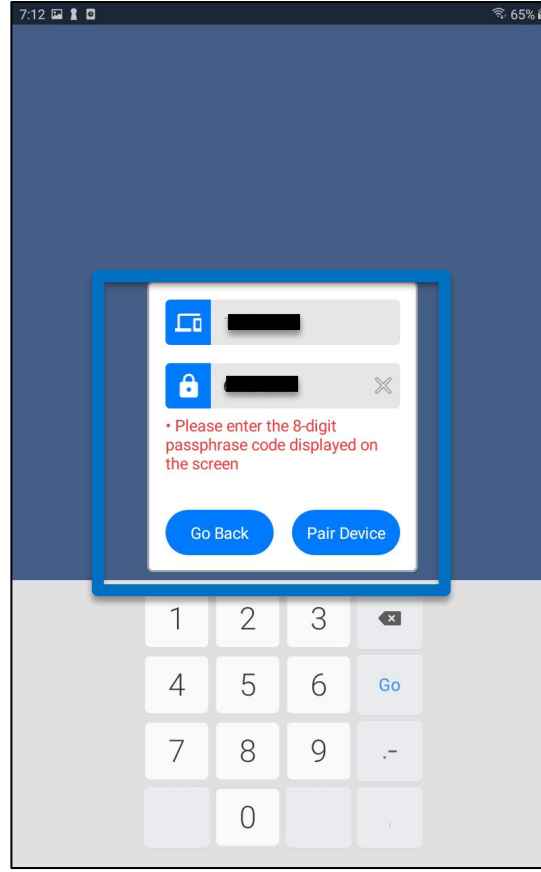
1 2 3

4 5 6

7 8 9

0

Enter the 8-digit Passphrase.
Then select Pair.



7:12 65%

Go Back Pair Device

- Please enter the 8-digit passphrase code displayed on the screen

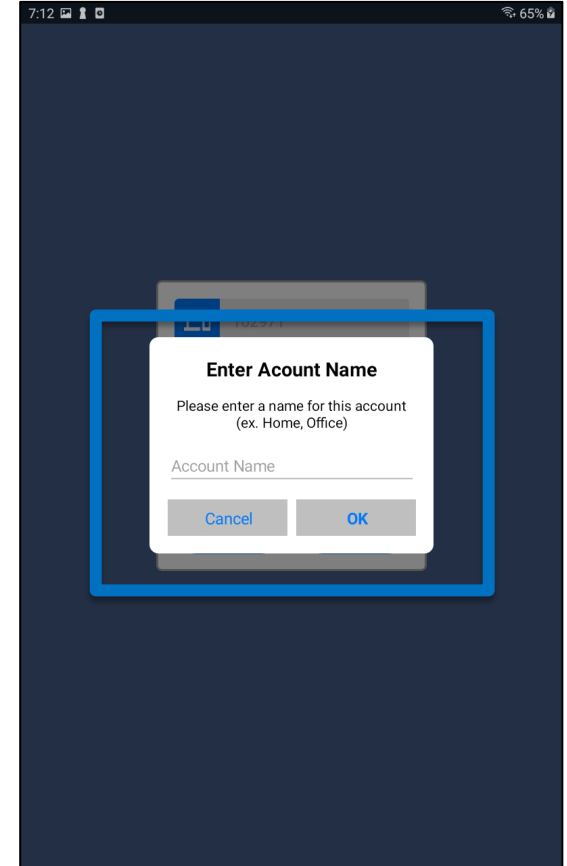
1 2 3

4 5 6

7 8 9

0

Enter a name for the account
and click OK.



7:12 65%

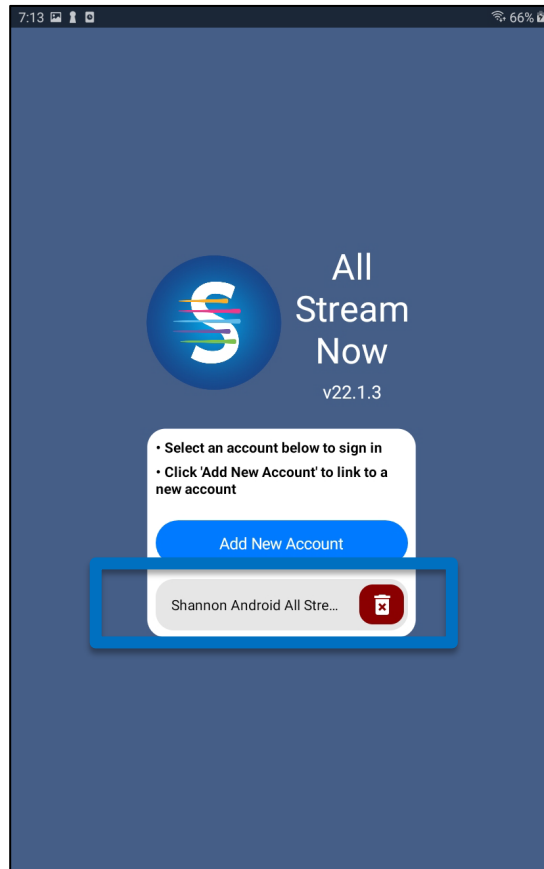
Enter Account Name

Please enter a name for this account
(ex. Home, Office)

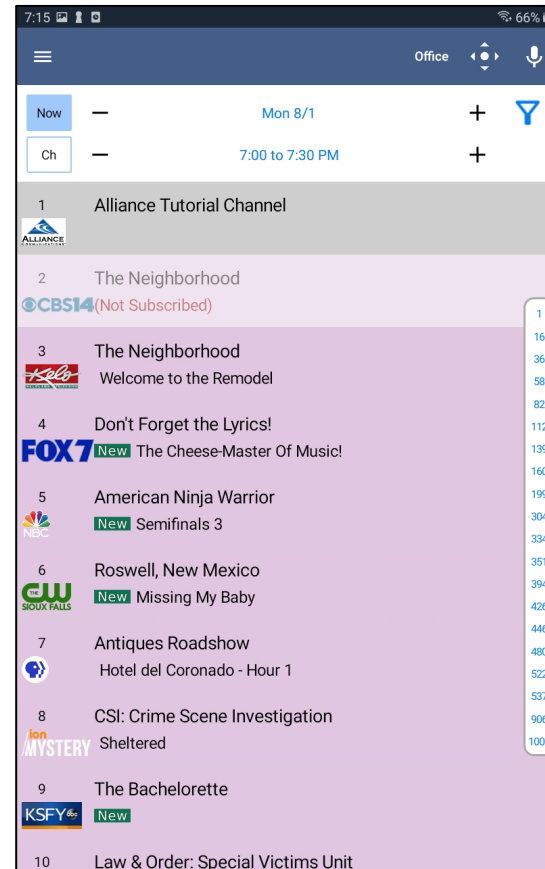
Account Name

Cancel OK

To watch programming on your device, select the account you just added.



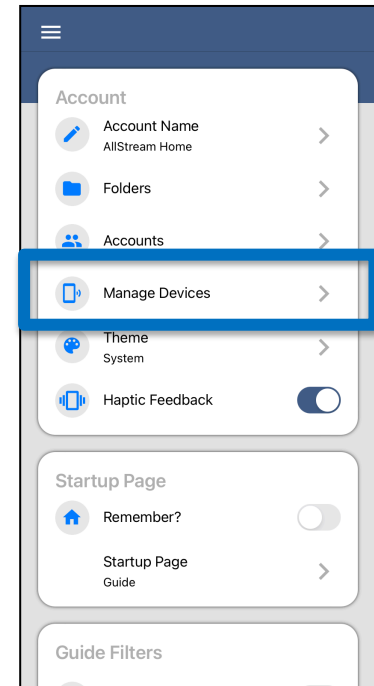
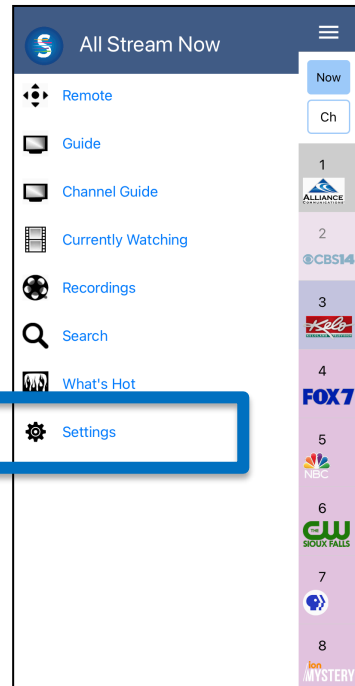
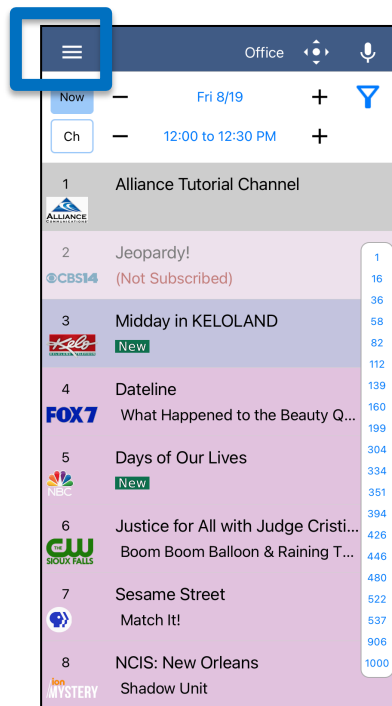
The programming will appear.
Select the channel you want to watch.



How to add AllStream to more devices

You can add AllStream to more devices. You just need to generate a new login and passphrase.

From an Android device that already has active AllStream service, press the Menu button at the top. Then press Settings, then Manage Devices.



How to add AllStream to more devices, continued

Next, a new Login and Passphrase will display on your screen. Use that information when activating AllStream on additional devices.

If you're adding another Android device, repeat the steps in this user guide. If you're adding an Amazon Fire TV stick, an Apple TV or an iOS device, refer to the user guides for activating AllStream on those devices.

You can also use this area to delete any devices currently authorized.

